



THE *PHARMACIST-LED* PBM ALTERNATIVE

CLINICAL CASE STUDIES

EMPIRX HEALTH[®]
Customer-First Pharmacy Care.

empirxhealth.com



Contents

Letter from EmpiRx Health's CEO 3

Who We Are 4

Plan Performance 5

Case Study #1: Why Clinical, Pharmacist- 6
Led Collaboration Matters

Case Study #2: Our Clinically™ Platform 7
Drove Value & Positive Outcomes

Case Study #3: Treating the Patient, 8
Not the Condition

Case Study #4: Evidence-Based Therapy 9
Recommendations Optimizes Care & Cost

Pharmacy Care That Puts You in Control

EmpiRx Health's mission is to provide the highest quality, clinically-driven pharmacy care that ensures the health and well-being of patients, while substantially reducing costs for our valued clients.

From our founding more than a decade ago, we have advanced this mission by always putting our clients and members first. We empower them to take control of their pharmacy benefits, healthcare outcomes, and financial results.

At the heart of EmpiRx Health's transformative pharmacy care mission is our unique operating approach that puts pharmacists at the center of the PBM service model. This helps to ensure that pharmacy benefits decisions are always based on clinical appropriateness and what's best for patient health, not the dictates of benefit plan designs and formularies.

Simply stated, the EmpiRx Health pharmacist-led PBM model is all about ensuring that patients receive the right drugs, at the right time, at the right cost.

Clinically-driven and pharmacist-led pharmacy care works – and this booklet has the real-world results to prove it. We hope you find these authentic care case studies inspiring for how you can radically improve your pharmacy benefits plan, and helpful in choosing the right PBM to keep your members healthy while lowering the costs of prescription drugs.

When you do the right thing for patients, everyone wins.



Danny Sanchez

Chief Executive Officer
EmpiRx Health

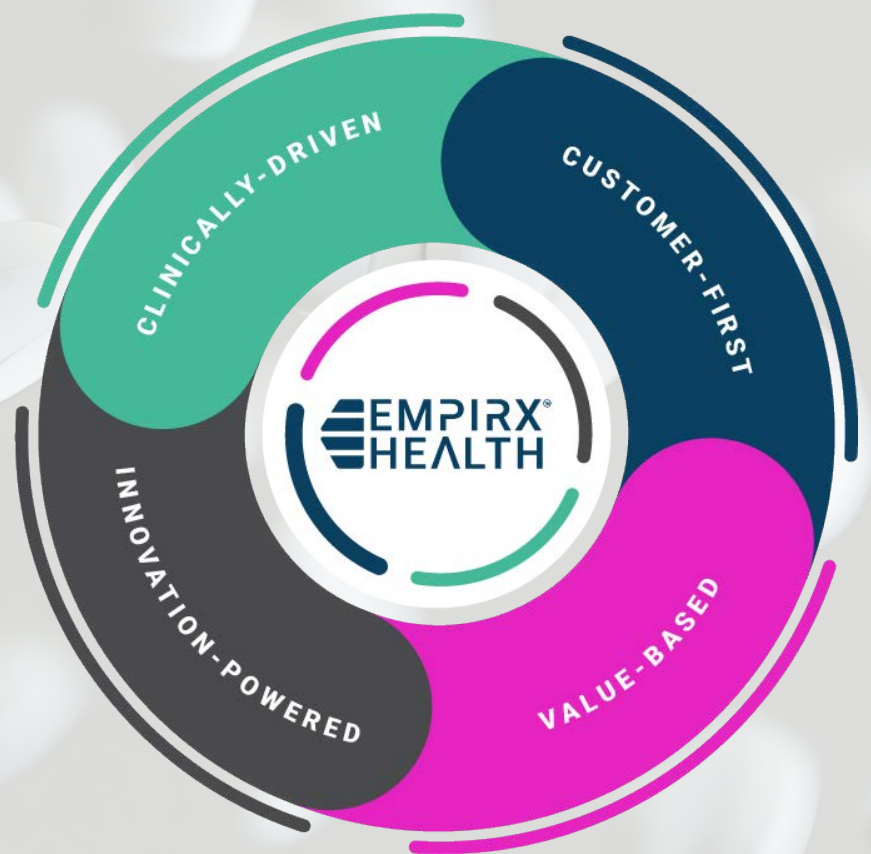
Who We Are

EmpiRx Health is the leading clinically-driven, customer-first pharmacy benefits management (PBM) company that puts the pharmacist at the center of the pharmacy care model. Leveraging our AI-powered pharmacy care platform, Clinically™, EmpiRx Health's clinical pharmacists and client experience teams provide the highest quality care and service. This enables plan sponsors to measurably improve their member health outcomes while substantially reducing prescription drug costs.

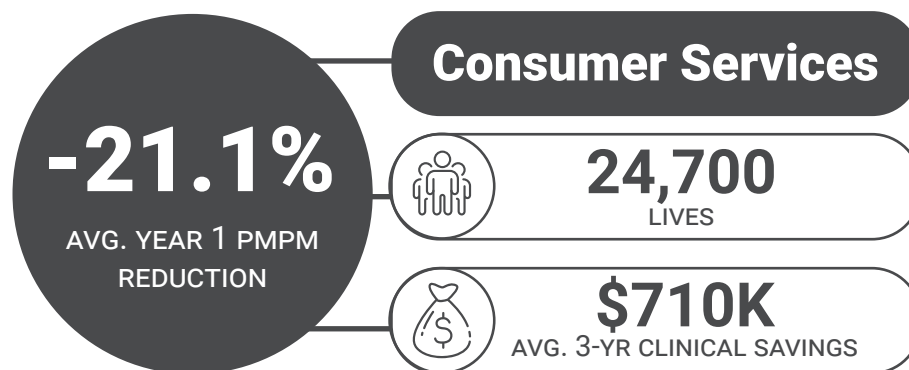
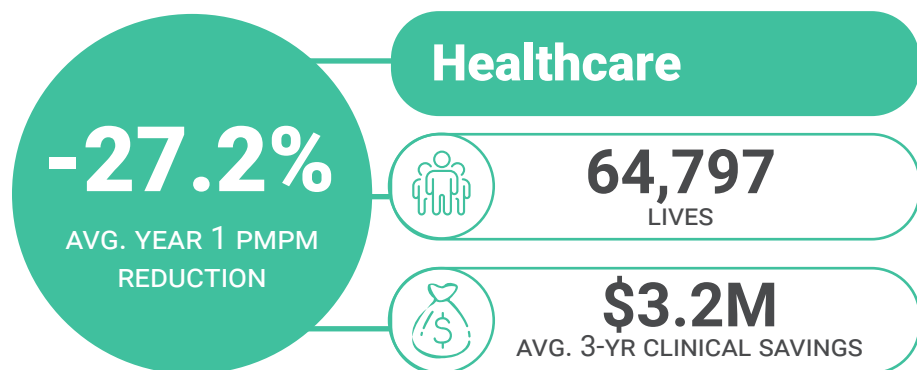
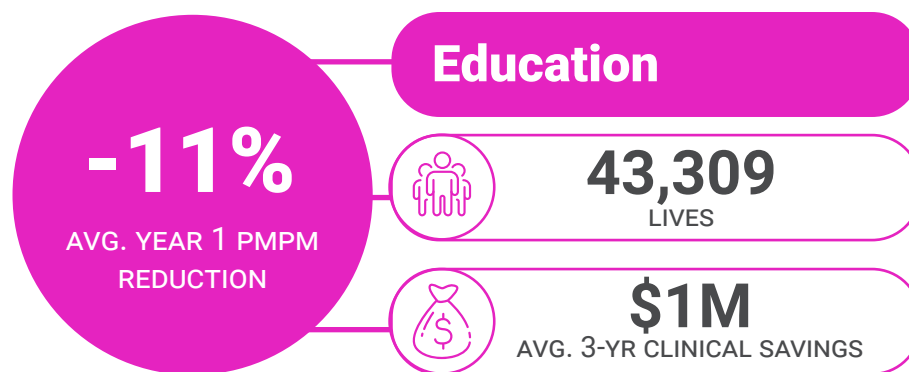
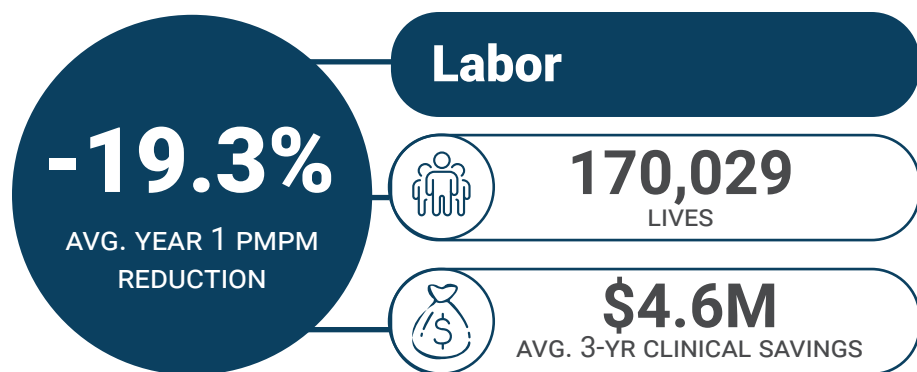
EmpiRx Health is fundamentally different than other PBM companies. Our pharmacist-led operating model ensures that you receive the most clinically-appropriate and cost-efficient medication therapies that keep your members healthy, happy, and productive – *and lowers drug spending and costs.*

Since our founding more than a decade ago, we have advanced a unique, clinical-centered pharmacy care strategy that prioritizes optimizing patient health outcomes while effectively bending the prescription drug cost curve. Our revolutionary operating model has flipped the traditional PBM script, benefiting the 180 million-plus patients who rely on commercial health plans for their healthcare.

We invite you to learn more about EmpiRx Health's unique pharmacy care model that is transforming the PBM world by always putting patients and clients first.



Proven Plan Performance Across Multiple Industries





Ted*

54-year-old male with high blood glucose caused by high cortisol levels, Type 2 diabetes, benign growth on adrenal gland

\$378,088

ANNUAL PLAN
SAVINGS FROM THIS
SINGLE INTERVENTION

*Name & picture changed to preserve anonymity.

Flag



Original Rx: Korlym 300mg

Clinic*ally*™ Identified: High-risk patient, high-cost new therapy

Review



Upon reviewing this case, our Clinical Pharmacist discussed the patient's whole health condition with the endocrinologist and the prescribed medication, which is indicated for Cushing's syndrome. The patient did not have Cushing's, and the Korlym is not an optimal therapy for diabetes.

Collaborate



Our Pharmacist recommended an alternative medication to optimize diabetes therapy.

Counsel



New Rx: Bydureon 2mg

Patient's blood glucose levels stabilized over the next two weeks, and symptoms improved, facilitating his return to normal daily activities.





Mark*

34-year-old male with
Crohn's Disease.

\$111,015

ANNUAL PLAN
SAVINGS FROM THIS
SINGLE INTERVENTION

*Name & picture changed to
preserve anonymity.

Flag



Original Rx: Skyrizi 360mg injection

Clinically™ Identified: Specialty Medication with a lower cost, first line agent

Review



Upon reviewing the case, our Clinical Pharmacist determined that the member had not yet tried any first line therapy for control of their Crohn's Disease symptoms.

Collaborate



Our Clinical Pharmacist discussed a lower-cost, more clinically appropriate alternative. The prescriber agreed.

Counsel



New Rx: Methotrexate 12.5mg weekly

The patient's condition is now well controlled on an equally efficacious first line agent.





Amy*

41-year-old female with
Hidradenitis Suppurativa

\$58,719

ANNUAL PLAN
SAVINGS FROM THIS
SINGLE INTERVENTION

*Name & picture changed to
preserve anonymity.

Flag



Original Rx: Cosentyx 300mg/2mL, Inject 2mL every 2 weeks
Clinic*ally*™ Identified: High-cost specialty medication

Review



Our Clinical Pharmacist reviewed the prescribed Cosentyx maintenance treatment for the patient and reached out to the prescriber to discuss.

Collaborate



Our Clinical Pharmacist spoke with the prescriber's office and discussed the eligibility to follow a step-wise approach to therapy starting at a monthly dosing cadence.

Counsel



New Rx: Cosentyx 300mg/2mL, Inject 2mL every 4 weeks
The prescriber agreed to switch the patient to a monthly maintenance dosing frequency, resulting in plan savings.



**Ann***14-year-old female with
plaque psoriasis**\$40,515**ANNUAL PLAN
SAVINGS FROM THIS
SINGLE INTERVENTION

*Name & picture changed to
preserve anonymity.

Flag

Original Rx: Stelara SOSY 45MG/0.5ML
Clinic^{ally}™ Identified: High-cost specialty medication

Review

The patient had previously had a favorable clinical response to Stelara; however, after discontinuing the medication for one year, she began experiencing disease flare-ups. Due to the recurrence of symptoms, resumption of therapy was deemed necessary to regain disease control.

Collaborate

Our clinical pharmacist reached out to the prescriber to discuss a newly available biosimilar that offers a lower-cost yet clinically appropriate alternative. The prescriber agreed to transition the patient to the recommended Rx.

Counsel

New Rx: Yesintek SOSY 45MG/0.5ML The therapy has maintained disease stability without any reported adverse effects, supporting its effectiveness as a cost-efficient alternative.





To learn more, visit empirxhealth.com

EMPIRX HEALTH[®]
Customer-First Pharmacy Care.