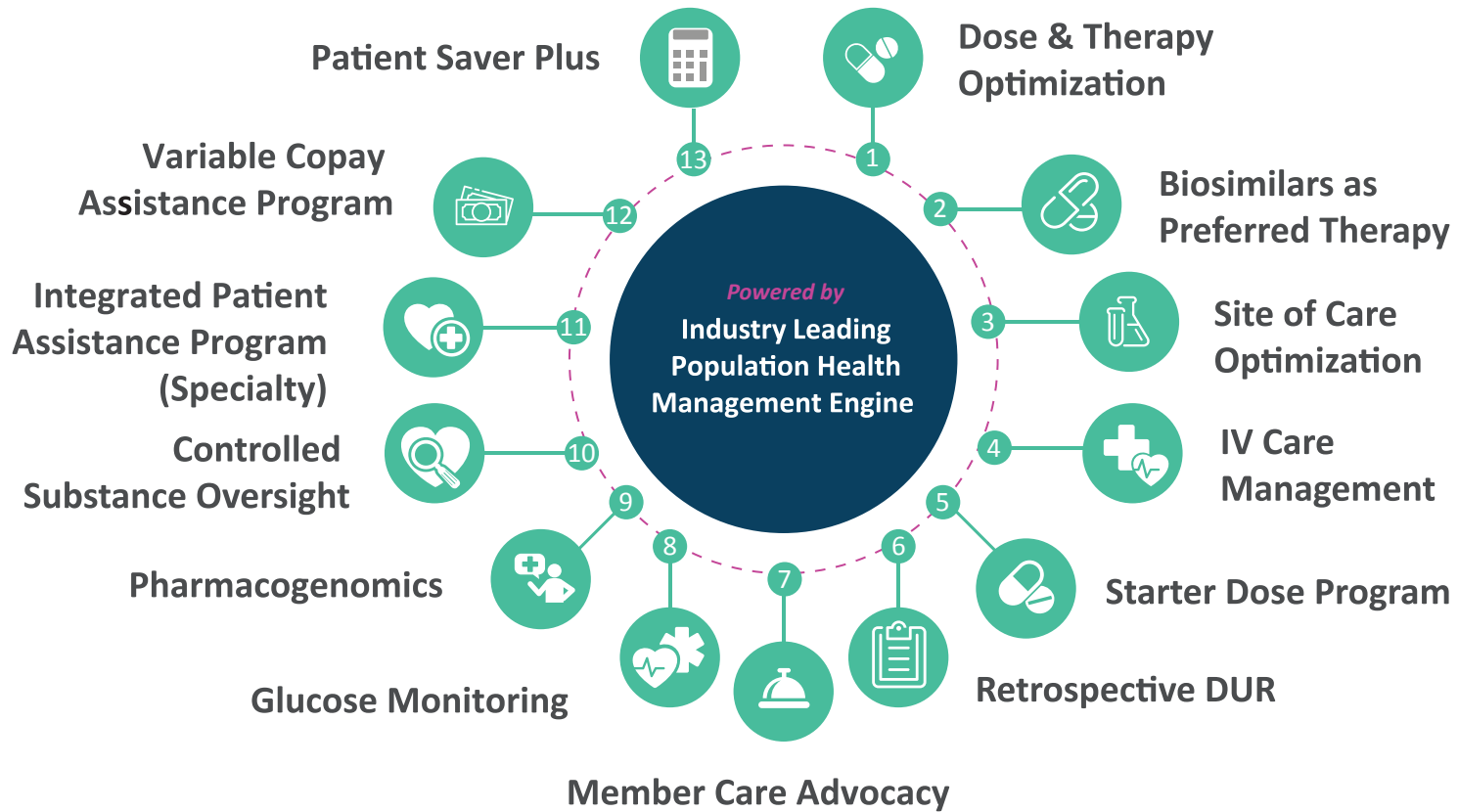


# EmpiRx Health Tailored Cost & Care Solutions

*Successful healthcare benefits optimize both financial and health outcomes*

Our solutions encompass waste management, optimized drug utilization, innovative care models, and overall cost containment to drive unparalleled pharmacy care results. Continuous profiling of your membership pinpoints the right solutions at the right time.



# EmpiRx Health Cost & Care Solutions

## At-A-Glance

- 1. Dose & Therapy Optimization.** We identify opportunities to adjust dosage, strength, and quantity across 100+ specialty and non-specialty medications to improve medication adherence and health outcomes. Eliminating wasteful prescribing produces savings that lower plan and member costs.
- 2. Biosimilars as Preferred Therapy.** A biosimilar is a biologic product developed to be highly similar to a previously FDA-approved reference product. We engage prescribers to encourage prescribing a biosimilar as a lower-cost alternative for every medication where a biosimilar therapy is available. Biosimilars are just as safe and effective as their reference product and **can decrease medication costs by 25% to 40%** while delivering the same or better clinical outcomes. Continuous pipeline monitoring and program updates ensure the most cost-effective medications are preferred as they become available.
- 3. Site of Care Optimization.** We review a plan's medical claims data to identify opportunities for moving drugs from medical to pharmacy benefits coverage where our Clinical Pharmacists review medications for appropriateness, utilizing clinical guidelines and prescriber engagement for optimal outcomes. This solution prevents exposure to excess costs by eliminating double billing and overcharging while increasing cost visibility. Recommended for clients with high medical drug spend who are interested in shifting coverage to pharmacy benefits for better control and cost savings.
- 4. IV Infusion Care Management.** An elevated care experience for members undergoing infusion therapy that promotes positive health outcomes and can save on total healthcare dollars. Pharmacist-physician engagement, patient counseling, and precise care coordination on the patient's behalf protect plan sponsors and members by mitigating negative health outcomes or unnecessary medical expenses that can result from inappropriate treatment or disjointed care. Clients receive this program as part of Site of Care Optimization if the infusion drug category is included in plan coverage.
- 5. Starter Dose Program.** A limited fill (starter dose) is applied to the first fill of opioids, benzodiazepines, sleep aids, and certain specialty products to promote safety and eliminate drug and spend waste. While a patient is trialing therapy, we monitor their side effects and health condition to help prevent inappropriate use.
- 6. Specialty rDUR.** A retrospective review of 150 unique specialty medications ensures a patient's treatment journey is free from adverse drug events and that therapy is discontinued when no longer clinically needed. Our Pharmacists monitor drug-drug interactions, appropriate generic utilization, and proper dose, and help ensure that any new medications added to the patient regimen are safe to use in combination with the specialty medication. Our approach promotes safety and improves dosing which delivers cost savings for the member and the plan.

# EmpiRx Health Cost & Care Solutions

## At-A-Glance

- 7. Member Care Advocacy.** A unique concierge service model designed for members with healthcare and service complexities, offering personalized, high-touch patient care. Our expert team of clinicians takes charge of coordinating care between prescribers and pharmacies, handling every aspect on the members' behalf. By providing a single point of contact familiar with their medications, prescribers, pharmacies, and health concerns, we remove patients from the middle of care navigation, ensuring seamless pharmacy care from behind the scenes. Our model delivers compassionate, consistent, and proactive phone and digital outreach, bridging gaps in care and improving quality of life.
- 8. Glucose Monitoring.** Proactive assessment of glucose levels via a continuous monitoring device allows us to proactively assess and identify a health risk of a member. Participants are identified and once enrolled, their blood sugar levels are recorded and uploaded to a portal shared with our Clinical Pharmacist for monitoring. If a risk is identified, our Pharmacist alerts the member and the physician that a potential intervention is needed. This unique care management approach allows us to stay two steps ahead of a health risk, greatly benefitting clients with membership in particular industries subject to regulatory obligations for blood glucose monitoring (e.g., certain transport operators).
- 9. Pharmacogenomics.** In partnership with OneOme, co-founded by the Mayo Clinic, our PGx solution applies evidence-based DNA testing and analytics to help improve outcomes and reduce costs through personalized medication decisions. Test results are integrated into our Population Health engine and our Pharmacists guide prescribers on the best therapy choices and doses based on each patient's unique genetic profile. This level of precision drives better patient health outcomes and can reduce costs for the member and the plan across the total healthcare benefit.
- 10. Controlled Drug Oversight.** Identifies fraudulent and suspicious prescription dispensing activity and identifies pharmacies that may be attempting to process high-cost, low-value products or inappropriate volumes of controlled substances. Our clinicians conduct concurrent and retrospective reviews on an ongoing basis to prevent unnecessary and wasteful plan charges.
- 11. Integrated Patient Assistance.** Partnership with best-in-class vendors obtains patient assistance via manufacturer funding for eligible specialty medications. We ensure a plan's specialty utilization is appropriately managed while providing a seamless, safe, and coordinated clinical care experience for eligible patients whose costs are as low as \$0.
- 12. Variable Copay Assistance.** Copay assistance for eligible specialty medications from manufacturers and other organizations protects eligible members and the plan from high drug costs. We can assess maximum member pay on an ongoing basis to safeguard member responsibility.